



MARITIME
CHRISTIAN COLLEGE

**Master's
Academic Catalogue
2024-2025**



MARITIME
CHRISTIAN COLLEGE

**MASTER OF ARTS IN DISCIPLE
MAKING & MINISTRY
LEADERSHIP**

ACADEMIC CATALOGUE

2024-2025

9 Lilac Avenue
Charlottetown, Prince Edward Island
C1A 6L1 Canada

902-628-8887

www.mccpei.com

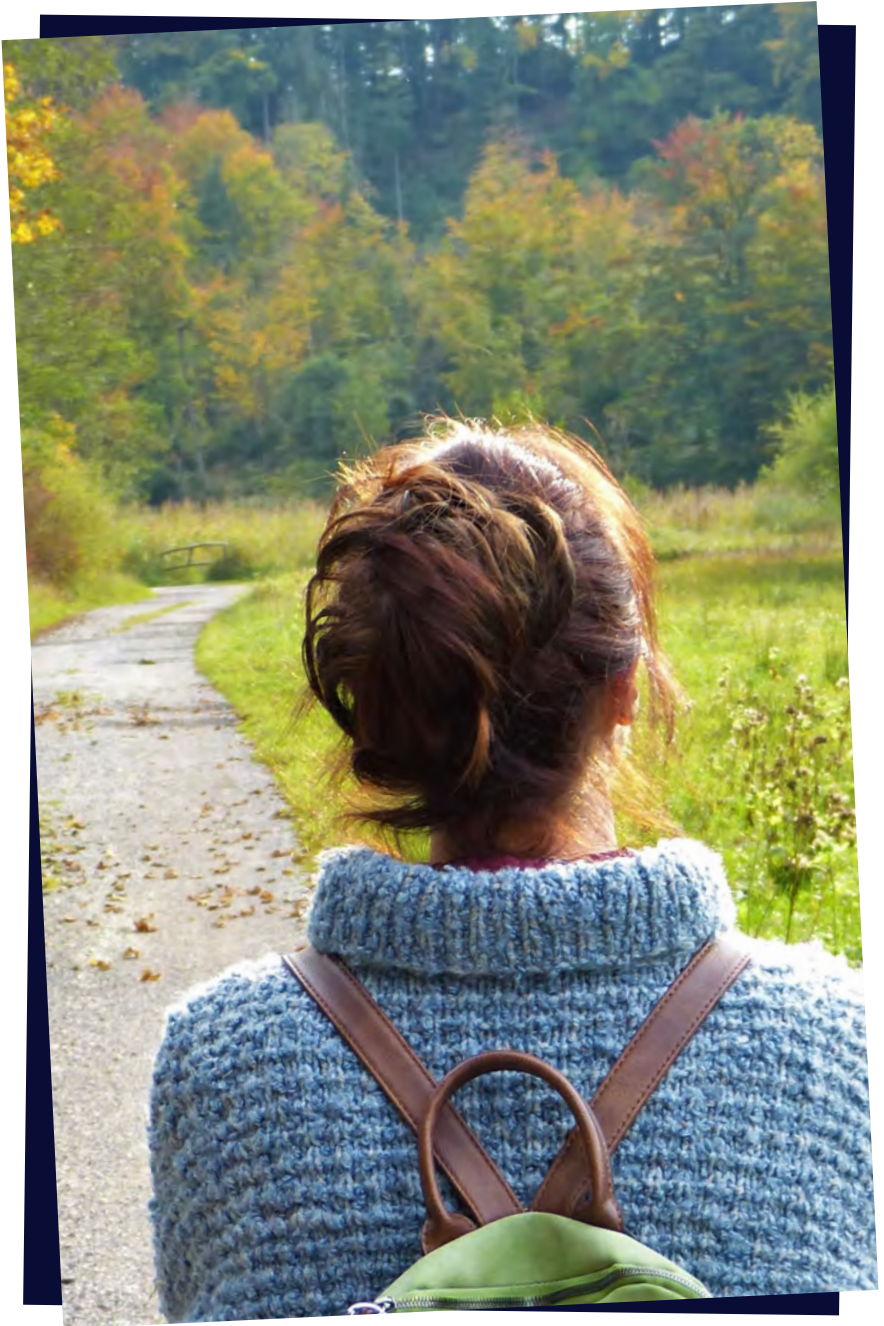
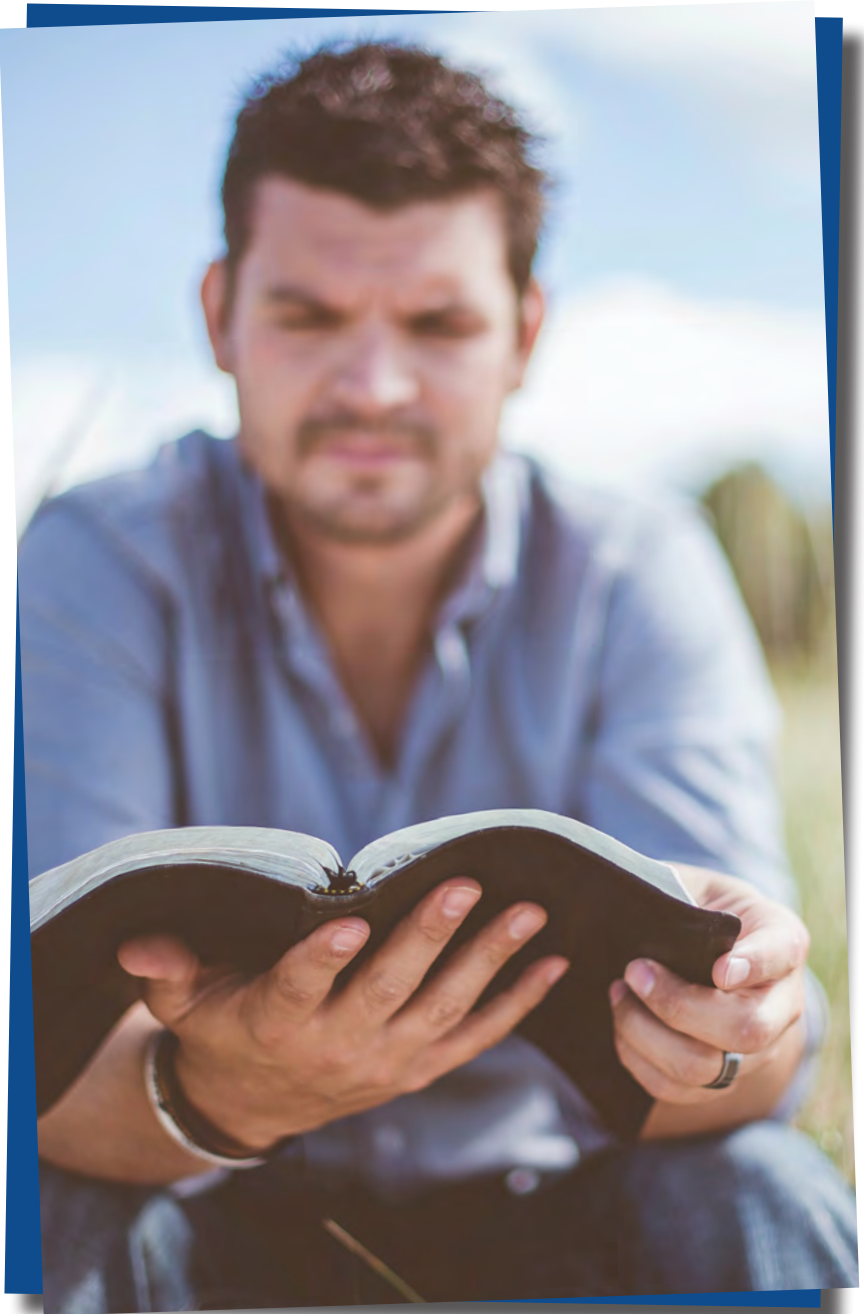


Table of Contents

Message from the President	5
Introduction	7
Master's Program	11
Course Descriptions	14
Academic Policies	16
Academic Standards.....	17
Application	20
Fees	22
Financial Assistance.....	23
Bursaries	24
Awards	26
PEI Government Grants.....	27
Canadian Government Loans	27
Special Events.....	28
MCC Personnel.....	31
Master Calendar	34





Message from the President

If you are reading this Academic Catalogue for our Master of Arts (MA) in Disciple Making & Ministry Leadership, then you are considering entry into a graduate program at Maritime Christian College that will be a life-changing experience for you as a disciple maker. Our MA has been developed by some of the top disciple makers in the world specifically for the unique individual who feels a powerful call to dedicate their life and ministry to disciple making.

Maritime Christian College has aligned all its graduate, undergraduate, and certificate programs to focus on sound biblical teaching about making disciples. But we don't stop there. All our programs are designed to immediately apply what you have learned with practical application in your life and ministry. That is an important principle in our MA program: you study where you are and immediately apply what you're learning to the ministries you are actively involved with.

We use a tagline on many of our program videos that states MCC is "reclaiming the innovative spirit of the 1st century church for the 21st century". This is another characteristic of our MA in Disciple Making & Ministry Leadership: we focus on helping you apply Jesus' principles of disciple making in innovative ways into today's complex modern society. The early church, working under the power of the Holy Spirit, took the Gospel all across the Roman empire to people who had no working knowledge of Christianity by using the tools available to them in the 1st century. We help our students apply the same mindset of innovation to help them start and grow ministries in today's society to reach people with the Gospel and make disciples who in turn make more disciples.

Focused, passionate, and driven: these are the characteristics of students who will succeed in Maritime Christian College's MA in Disciple Making & Ministry Leadership. Disciple making will not be something you do; it will be who you are.

Welcome to Maritime Christian College.

A handwritten signature in black ink, appearing to read "Richard Jones". The signature is fluid and cursive, with a large initial "R" and "J".

Richard Jones





Incorporation

Maritime Christian College began as a vision among a group of Christian individuals who were intensely interested in the Lord's work in the Canadian Maritimes. The vision was fulfilled when the Government of Prince Edward Island, by granting Letters Patent, incorporated Maritime Christian College on January 19, 1960. Thus Maritime Christian College became Prince Edward Island's only Bible College.

Location and Facility

Maritime Christian College offices are located at 9 Lilac Avenue, Charlottetown, Prince Edward Island.

For the first three decades the College shared facilities with Central Christian Church. In 1993 the College purchased its own campus at 503 University Avenue, adjacent to the University of Prince Edward Island. In 2023 the College sold its property at 503 University Avenue and now rents office space from Sherwood Christian Church at 9 Lilac Avenue, Charlottetown, Prince Edward Island.

The primary location of the College is online at www.mccpei.com plus classroom space online with its Populi Learning Management System. Students from around the globe can enroll in a class as long as they have some form of computer and an internet connection. The College makes use of Perlego.com as an option for an online library resource. Classes are asynchronous on a 14 week semester in Fall, Spring, and Summer. At this time the College also offers certificate programs at the undergraduate level - for more information see the Undergrad Academic Catalogue.

Affiliation

From its conception, Maritime Christian College has been affiliated with and supported by the Independent Christian Churches. These Churches are a part of the Restoration Movement, which began in the 19th century by such men as Alexander Campbell and Barton Stone. This Movement is based on a plea for unity among God's people by restoring the essential elements of

biblical Christianity. Through the years Maritime Christian College has been providing solid, biblically-oriented education for Christian leaders who are preparing for a variety of ministry opportunities in the Maritimes and around the world.

Our Purpose

To biblically educate and equip people to become disciples of Jesus who make disciples – anywhere in the world.

Our Core Values

- We honour the Bible and its authority.
- We provide quality educational experiences for our students and we set high expectations for students to apply what they learn to their lives and ministries.
- We cultivate partnerships with churches and other like-minded organizations to make disciples.
- We exercise faithful stewardship of Kingdom resources.
- We are passionate about making disciples of Jesus as He commanded us to do.

Character

The character of the College is clearly defined in Maritime Christian College's Fourth By-Law.

“The Maritime Christian College, in its endeavour to educate and equip men and women for Christian service, shall make the Bible its chief textbook, arrange all its courses of study and conduct its work in harmony with the spirit and letter of the Word of God. To this end every director, officer and teacher must be a member of the Church of Christ (undenominational) and must believe, without reservation, in the full and final inspiration of the Bible to the extent that it is to them the infallible Word of God and therefore the all-sufficient rule of faith and life; in the Deity and Supreme authority of Christ; obedience to the Gospel; the edification of the Church; and the restoration of its unity on the New Testament basis.

Believing that such faith and a church with a program in harmony with this faith are essential to the salvation of the world, the Maritime Christian College shall endeavor to so educate and inspire its students as to make them effective servants of Christ.”

Our Learning Outcomes

Maritime Christian College has adopted five student learning outcomes that are relevant to the student in carrying out life-long learning and ministry.

1. Live Faithfully.
2. Think Biblically.
3. Grow Intellectually.
4. Improve Professionally.
5. Learn Continually.

The graduate student is often a leader within a ministry context and must live a life worthy of the calling they have received. Adherence to Biblical principles within one's own life is essential for any leader within a ministry context. Likewise, the graduate student should seek out God's Word on a daily basis and have a Christian Worldview by which they can interact within the world, clarifying for all this Biblical perspective in a positive way. They should desire continual learning to face new challenges as they arise within a ministry context.

Online Classes

MCC's online classes have been developed with unique aspects to learn and immediately apply the learning to the student's own community and context:

- They are asynchronous – you take them at the time and place that fits your schedule throughout the week in order to meet the weekly assignment deadlines.
- Digital engagement – each online class requires engagement in discussion forums between students and the Professor to show application of the teaching.
- Small Class Size – each class has a maximum enrollment of 12 students in order to create a better relational environment for discussion forums.

Accreditation

MCC is recognized by the province of Prince Edward Island as a degree-granting body through The University Act. The recognition of specific MCC courses, certificates or degrees at secular universities or sister institutions is dependent upon their policies.

Partnerships

Maritime Christian College deeply appreciates the support it has received from organizations committed to the mission of disciple making. In particular, MCC has benefited from the mentorship and hands-on work in course development from Real Life Ministries Texas and Renew.org. Leaders within these organizations have authored books used in the curriculum of several courses, designed and instructed multiple online courses, and provided advice to guide MCC's focus on disciple making. The Board of Directors, faculty and staff of Maritime Christian College are deeply thankful for their contribution to MCC's mission.

Real Life Ministries Texas



Brandon Guindon is the lead pastor of Real Life Ministries Texas, a non-denominational Christian church in Tomball, Texas, 30 miles north of Houston. Brandon has over 20 years' experience leading churches worldwide to become healthy and effective in making disciples of Jesus Christ. He has been an executive team member at Real Life Ministries in Post Falls, ID and at The MET Church in Houston, TX. He has authored and co-authored several publications on

Biblical discipleship, including the Real Life Discipleship Training Manual, Stay the Course, and Disciple Making Culture. Brandon holds a Bachelor of Science in Health Science from Linfield College and an M.A. in Church Leadership and New Testament Theology from Hope International University. He sits on the Board of Directors for the Relational Discipleship Network. Brandon is a bow hunter and avid outdoorsman. He and his wife, Amber, have four children, Emma, Olivia, Grady and Garrett.

Renew.org



Bobby Harrington is the point-leader of Renew.org and Discipleship.org, both collaborative, disciple-making organizations. He is the founding and lead pastor of Harpeth Christian Church (by the Harpeth River, just outside of Nashville, TN). He has an M.A.R. and an M.Div. from Harding School of Theology and a Doctor of Ministry degree from the Southern Baptist Theological Seminary. He is the author of more than 10 books on discipleship,

including Discipleshift (with Jim Putman and Robert Coleman), The Disciple Maker's Handbook (with Josh Patrick) and Becoming a Disciple Maker: The Pursuit of Level 5 Disciple Making (with Greg Weins). He lives in the greater Nashville area with his wife and near his children and grandchildren.

MASTER'S PROGRAM



Master of Arts in Disciple Making & Ministry Leadership Degree

2 Years / 36 credit hours / 2.67 G.P.A.

The role of the church is to make disciples that make disciples. This engaging program will provide you with the knowledge and real-world application skills to be an impactful disciple maker for God/in the Kingdom of God. This fully online accelerated degree offers a balanced blend of Christian theology, disciple making strategies, and ministry leadership. You will gain hands-on learning experiences from world-class disciple makers and leaders.

What you will learn from this graduate level program:

- Foundational theology from world-class disciple makers on how to become a disciple who makes disciples.
- How to use the message and methods of Jesus to Learn and apply Jesus' model of intentional leadership in your own life as a disciple maker.
- Insights and cutting-edge practical application on how to build unified ministry leadership teams with a healthy culture focused on making disciples.
- How to engage cultural issues facing the church in these precarious times.

Careers:

- Ministerial Leader
- Church Programs Director
- Children, Youth or Young Adult Pastor
- Christian Educator
- Church Planter / Disciple Maker
- Pastor
- Campus Pastor
- Executive Pastor of Discipleship

This program is designed for the student who:

- Has a previous undergraduate degree
- Is serving in a full-time, part-time or volunteer role in a church or ministry setting.
- Is looking for accelerated Christian education at a graduate level that fits their busy lifestyle and ministry focus of disciple making.

PROGRAM OF STUDY

BIBLICAL AND THEOLOGICAL AREA

15 credit hours

- Old Testament (MABT501) 3
- Jesus Christ and the Gospels (MABT503) 3
- Acts of the Apostles: Disciple Making (MABT505) 3
- Biblical Theology to Fuel Disciple Making (MABT507) 3
- Apologetics (MABT509) 3

GENERAL EDUCATION AREA

3 credit hours

- Church History (MAGH511) 3

PRACTICAL AREA

18 credit hours

- Becoming a Disciple Maker (MAPR513) 3
- Disciple Making and the Local Church (MAPR515) 3
- Intentional Disciple Making (MAPR517) 3
- Healthy Ministry Leadership (MAPR519) 3
- Practicum/Capstone Project (MAPR600) 6

Total 36 credit hours



COURSE DESCRIPTIONS

BIBLICAL AND THEOLOGICAL AREA

MABT501 Old Testament **3 credit hours**

Study God's missional work through Abraham's family to bring blessing to the world.

MABT503 Jesus Christ and The Gospels **3 credit hours**

An examination of the Life of Christ based on the gospels. The geographical and cultural backgrounds of first century A.D. Palestine, as well as the travels and teachings of Christ, are brought to life.

**MABT505 Acts of the Apostles:
Disciple Making** **3 credit hours**

A study of the book of Acts, setting forth the establishment of the church and the beginning of Christianity.

**MABT507 Biblical Theology to Fuel
Disciple Making** **3 credit hours**

An overview of the key teachings in the Bible. From the grand storyline through doctrines of scripture, God, the fall, Israel, the gospel, new birth, baptism, saving faith, church, disciple making, ethics, and final restoration.

MABT509 Apologetics **3 credit hours**

Explore making a defense of the faith by examining common attacks against Christianity and by discerning how best to answer tough questions while seeking to make disciples.

GENERAL EDUCATION AREA

MAGH511 Church History **3 credit hours**

Survey of church history movements/revivals.

PRACTICAL AREA

MAPR513 Becoming a Disciple Maker 3 credit hours

Learn the skills to create and sustain a group of disciples who make more disciples.

MAPR515 Disciple Making and the Local Church 3 credit hours

Practical and proven methods for creating relational environments to facilitate disciple making in the local Church.

MAPR517 Intentional Disciple Making 3 credit hours

Examine the biblical reasoning and motivation behind making disciples, assessing progress as a disciple maker, and equipping students to make disciples who make disciples.

MAPR519 Healthy Ministry Leadership 3 credit hours

An in-depth examination of healthy ministry leadership, what it is, how to build it and sustain it.

MAPR600 Practicum/Capstone Project 6 credit hours

Gain practical experience as you complete a Capstone Project identified by you and your instructor / advisor according to your ministry interest.



ACADEMIC POLICIES



ACADEMIC STANDARDS

Academic Work Load

A semester hour of credit represents one hour of time on task per week for one semester. The College expects that a student devote at least 2 hours of study preparation and research for each hour of time on task.

Grades

We are presently using the numerical system for our final grades. 65% is the passing grade.

Letter	Description	Numerical Value	Grade Points
A	Excellent	96-100	4.00
A-		94-95	3.67
B+		92-93	3.33
B	Good	88-91	3.00
B-		85-87	2.67
C+		82-84	2.33
C	Average	78-81	2.00
C-		75-77	1.67
D+		72-74	1.33
D	Passing	68-71	1.00
D-		65-67	0.67
F*		0-64	0.00
P	Passing		0.00
I**	Incomplete		0.00
AU	Audited Course		0.00
WP	Withdrew Passing		
WF	Withdrew Failing		

* Percentage of Failing grade will be computed toward student's numerical average.

** The incomplete mark is for the student who, due to extenuating circumstances, is unable to complete the final exam or other work for a course by the posted end date for the course. In conjunction with the professor's agreement and the establishment of a schedule with due dates for completed work, the student will receive an Incomplete instead of a failing grade on their report card. Any Incomplete courses will not be applied to the student's overall G.P.A. If the assigned work is not completed by the set due date, a grade of F will be applied to the student's overall G.P.A.

Withdrawal from a course after week four shall result in a grade of WF. If a student withdraws during week one to four and is doing passing work, a grade of WP shall be given.

Academic Dishonesty:

Maritime Christian College endeavors to prepare men and women for Christian service. As part of that endeavor, students are expected to uphold a high level of honesty in their personal and academic lives. Acts of plagiarism, cheating, or other forms of academic dishonesty may result in failure of the assignment, the course or possibly dismissal from the school.

1. Plagiarism. The student who deliberately attempts to pass off the writing of someone else as his or her own is guilty of plagiarism. This offense can be of different degrees. It may involve either submission of a paper written by someone else or direct copying, without quotation marks and appropriate acknowledgment of the printed source.
 - a. Insufficient Documentation. Honesty and courtesy require that a writer acknowledge the source from which he or she draws material. This documentation provides both an acknowledgment of source and also support for their ideas. Insufficient or inaccurate documentation is a serious weakness in a paper. It will certainly result in a lower grade, or a rewriting of the paper, or if serious enough, a failure of the paper. The mark of zero will be given and the paper returned. It should be remembered that inadequate paraphrasing or closely following another's thoughts is the same as plagiarism.
 - b. Excessive Collaboration. Students are expected to do their own work. Naturally students will discuss their work with other students but excessive collaboration is objectionable. Submitting another person's work as one's own is absolutely prohibited. Such a practice will result in an F for the assignment and may well result in a failure for the course.
2. Cheating on exams is academic dishonesty. Those students who aid another student in the cheating process also have performed academic dishonesty.
3. Other forms of academic dishonesty include, but are not limited to, dishonesty concerning one's personal information or conduct; theft of another person's property; or the pirating of software.

Graduation Requirements

1. All academic requirements must be satisfied including the attaining of a cumulative 2.67 G.P.A.
2. The candidate must be approved for graduation by the Faculty as given authority by the Board of Directors.

Work Style / Return Policy:

All class work is to be typed on 8 ½ x 11 paper in a Microsoft Word Document, or PDF. The College uses APA 7 style. All assignments will be marked and returned to the students within 10 days.

Attendance Policy:

Each student is required to complete every class lesson and activity in each course taken. To miss a week deprives fellow classmates the interaction between their peers and the Course Instructor. The following regulations are in place to ensure student success and course interaction:

- Contact the Course Instructor of any upcoming absences as soon as possible.
- Complete assignments before the absence date if possible.
- Unexpected emergencies must be communicated as soon as possible to the Course Instructor.
- A 2-point penalty will be applied on timeliness on any unexcused assignments.
- A 1-point penalty will be applied on timeliness on any excused assignments.

Statute of Limitation on Finishing Degree Program

MCC will allow up to 10 years to finish a degree program. After 10 years many classes may have to be retaken due to changes.

Textbook Policy

Students are expected to purchase their own textbooks for each course. Textbook lists will be posted on the MCC website: mccpei.com/textbook-lists. The College makes use of Perlego.com as an option for an online library resource.

Code of Conduct

The College is a community in which the ideals of freedom, freedom of expression, and freedom of the individual are sustained. However, preservation of these freedoms and rights requires respect of the rights of all in the community to enjoy them to the same extent. In a community of learning, willful disruption of the educational process, and interference with the orderly process of the College as defined by the College administration or with the rights of other members of the College cannot be tolerated. Students enrolling in the institution assume an obligation to conduct themselves in a manner compatible with the College's function as an educational institution. To fulfill its functions of imparting and gaining knowledge, the College retains

the power to maintain order within the community and to remove those who are disruptive to the educational process.

Bullying and harassment as well as discriminatory practices are not acceptable or tolerated at Maritime Christian College. All College community members can expect to be treated in a fair and respectful manner.

Netiquette

Maritime Christian College does not tolerate disruptive or disrespectful behavior in the online communications in any course.

Grievance

Every student in the Maritime Christian College community has a right to initiate a grievance if they believe that the decision of the College authority or action from a College member was unreasonable, unfair or unjust. The student has the right to initiate the complaint resolution policy without fear of reprisal or threat of reprisal for doing so. The complaint resolution process has three stages, please contact the MCC office for a copy.

APPLICATION

Maritime Christian College Applicants

Maritime Christian College accepts all Applications for Admission but reserves the right to select from among those students that best fit MCC's stated mission as a post-secondary institution for training Christian leaders.

Statement of Faith

Maritime Christian College welcomes students from diverse backgrounds, irrespective of physical origin (ethnic, national, or racial), skin color, gender, political affiliation, age, marital status, family relationship, or handicap. As a faith-based institution, Maritime Christian College makes one exception to a student's background: religious belief and affiliation. Maritime Christian College expects its students to adhere in both good conscience and good faith to the following statement of faith, derived directly from Maritime Christian College's fourth By-Law.

- a. Maritime Christian College, in its endeavor to educate and equip men and women for Christian service, will make the Bible its chief textbook, arrange all its courses of study, and conduct its work in harmony with both the Spirit and letter of the Word of God. To this end, students must believe without reservation in the full and final inspiration of the Bible such that it is, to the student, the infallible Word of God, and therefore the all-sufficient rule of faith and life; in

the Deity and supreme authority of Jesus Christ; obedience to the Gospel; the edification of the Church; and the restoration of its unity on the New Testament basis.

- b. Believing that such faith and a church with a program in harmony with this faith are essential to the salvation of the world, Maritime Christian College will endeavor to so educate and inspire its students as to make them effective servants of Jesus Christ.
- c. Maritime Christian College must be independent, separate and apart from all other agencies. While intending to antagonize none, but seeking the friendship and cooperation of all in proportion that like aims are cherished, Maritime Christian College will press on to train Christian workers to preach, teach, and live Jesus Christ.

Education Requirements

- 1. A Bachelor's degree from a recognized College or University.
- 2. A 2.5 grade point average (based on a 4.0 grading scale) for the last 60 hours of their undergraduate program.

Procedure

- 1. Each applicant must complete and submit an Application for Admission by the following dates:
 - a. August 15th for the Fall Semester
 - b. December 15th for the Spring Semester
 - c. April 15th for the Summer Semester
- 2. Each applicant must have their official transcripts of all post secondary work sent to Maritime Christian College by mail or email direct from the school.
- 3. If English is not the applicant's first language they may be required to provide one of the following minimum English testing scores:

Test Description	Level of English	
IELTS	7	minimum of 7 in writing & speaking, 6.5 in reading & listening
TOEFL - Internet	94	minimum of 22 in reading & listening, 26 in speaking, 24 in writing
CanTEST	5	

FEES

Tuition and fees are made affordable thanks to:

- The generous donations of individuals and churches;
- Our desire to provide a quality Christian education at a reasonable price; and
- Our desire to enable the graduate to enter ministry without being overburdened by debt.

The College Board reserves the right to change the schedule of tuition and fees at any time and without notice.

Tuition and Fees*		
Tuition	\$825 CAD	Per 3 credit hour course
Graduation	\$75 CAD	Degree
Transcript	\$10 CAD	Per official copy
Perlego	\$105 USD	Per year

* All tuition fees are due and payable on registration day each semester.

Refund Policy

All tuition fees are due and payable on registration day each semester and non-refundable after that day.

Delinquency of Accounts

- **Administrative Fee** - Accounts remaining unpaid as of the 1st of the month after registration will be assessed a \$100 administrative fee.
- **Interest Charge** - Accounts remaining unpaid in whole or in part as of the end of the semester they are charged will incur 1% non-compounding, cumulative interest on a monthly basis, beginning the month after the end of the semester.
- **Payment of Debts** – MCC considers non-payment of debt a serious issue and is convinced that it will be to the good of any student to take care of his or her financial obligations as they come due. Individuals with open balances will not be able to register for further academic classes. A degree, diploma or certificate will not be granted, nor will an official transcript be issued, until the student takes care of all financial obligations with the College.

FINANCIAL ASSISTANCE



Maritime Christian College (MCC) is pleased to make available various bursaries and awards to assist students. The assistance offered is provided by various individuals, families, and churches in memory of a loved one or for the basis of preparing believers for works of service.

Recipients must be of good Christian character and conduct, and exhibit the traits of diligence and sincerity. Bursaries and scholarships are decided by a faculty committee on a semester basis. If enrolled for two or three semesters in a school year, bursaries and scholarships are renewable for second and third semester pending a satisfactory review by the faculty committee (to determine if qualifications and grades are satisfactory to the standard of the school – for example passing all courses and obtaining the required GPA).

BURSARIES

Bursaries will be awarded based on financial need unless otherwise specified by the individual bursary qualifications. Applications are available on our website: mccpei.com/bursaries-scholarship and are due by August 15th.

John and Lillian Bergman Recruitment Scholarship Fund: This annual award consists of interest from funds given from the Estate of M. Lillian Bergman to assist a first year student(s) of Maritime Christian College, on the basis of evangelistic potential and financial need.

Central Street Christian Church: This bursary, in the amount of \$500, is for a student from the Western School District on PEI. Students from Central Street Christian Church in Summerside will be given first consideration. If no applicants from the Western School District, the bursary is to be awarded to any worthy student desiring to attend MCC or already a student of MCC.

Christian Church at Breadalbane: This annual bursary consists of interest from funds given by Breadalbane Christian Church members in 2009. The bursary will be awarded to a student at MCC planning to enter the missionary field or missionary ministry. .

Christian Church of Moncton: This bursary consists of \$20,000 given by the Christian Church of Moncton. An award of \$1,000 is to be given annually as long as funds remain available and a suitable candidate exists.

Burtis M. Crouse Memorial Scholarship Fund: Provided each year in memory of Burtis M. Crouse by his family and friends. Presented to a student showing a desire to enter into the full-time ministry. A student(s) from the Burt's Corner/Dorn Ridge/Fredericton, NB areas will be given preference.

Estey Family Bursary: This bursary was established by Mary Jones (Estey) in memory of her mother, Hattie Armstrong (Estey) and her siblings Miriam Pugh (Estey), Marlene Dunphy (Estey) and David Estey. For a deserving student on the basis of financial need.

Harbours of Grace Scholarship Fund: This bursary will be granted to a student at MCC who is a resident of Newfoundland on the basis of financial need.

Louis H. Herring and J. Hubert Beck Memorial: Interest from a fund established by Louis Herring of Murray River, PE and Hubert Beck of New Glasgow, NS to assist students at MCC who sincerely intend to go into full-time gospel ministry. Recipients of the bursary must desire to serve Christ and their fellow man.

May Herring Memorial Scholarship: Interest from a fund established by the estate of Margaret Herring in memory of her sister May Herring.

Montague Christian Church: An annual grant to a student from Montague Christian Church, PE attending Maritime Christian College.

Murray Harbour Church of Christ: An annual grant of \$500 will be given to a student from Murray Harbour Church of Christ, PE attending Maritime Christian College. If there are no applicants from the Murray Harbour Church of Christ in any given year, the bursary may be awarded to any worthy student(s) desiring to attend MCC or already a student at MCC.



New Brunswick: An annual grant of \$200 is given by Lord's Cove Church of Christ in Deer Island, NB. Qualified students must be in financial need and must be a resident of New Brunswick. First year students will be given preference, but it will also be available to advanced students.

Marilyn J. Norris Memorial: Consisting of funds given by Paul Norris and his daughters, Bethany Jane and Jacqueline Rose, in memory of Marilyn Joan Norris who went to be with her Lord on January 18, 1982. Given to the student at MCC who best demonstrates love for God and neighbor.

Sherwood Christian Church: An annual grant of \$500 will be given to each student from Sherwood Christian Church, PE who is attending MCC.

Michael Richard Smith Memorial: Consisting of funds given each year by Michael's friends, in his memory. The major factor will be the need of a mature student at MCC who is dedicated and diligent in their studies, even under extenuating circumstances. Preference will be given to those showing a continuing, special attention to serving others, especially those in care who cannot provide for themselves.

James Jarvis Stewart Memorial: Interest from a fund established by the James Jarvis Stewart Memorial Fund For Christian Education Inc. will be awarded to a deserving student attending Maritime Christian College.

Tuition Scholarship: The scholarship consists of funds donated in memory of Edward P. Benoit, E. Neil Burt, John E. Carew, Hazel (MacNeil) Dewar, Dorothy J. Lord, Garnet & Gertrude McIntyre, Earl Ohl, Gordie Ohl, Alvin Rowledge and Della Murphy, Donald F. Stewart, Neil W. Zimmerman, as well as endowments from the Grape Grove Church of Christ, the Rodney Christian Church and the Truro Church of Christ.

Westport Church of Christ: An annual grant of \$200 will be given to a student attending MCC from the Church of Christ in Westport, NS; other churches of Christ in Digby Co., NS; or other churches in Nova Scotia.

AWARDS

The following awards are normally presented at Graduation. Recipients are decided by a faculty committee. Application is not necessary as all qualifying students will be considered.

Preston and Jessie Beck Memorial: Consisting of interest from a fund established of monies which Preston and Jessie Beck received on the occasion of their 50th anniversary. The award is given to the student, who is a member of the Christian Church, receiving the highest grade in doctrinal courses offered during the year.

Elocution: Funds given to MCC by the Halifax Christian Church, NS in memory of Kenneth T. Norris who saw this area as one of his major interests and areas of concentration during his twenty-eight years of active teaching at MCC. The award is presented to the student who is of good Christian character and has shown exceptional ability in communicating the gospel from the pulpit.

R. Eldon Hickox Memorial: Consisting of the interest from a fund contributed by the close relatives and friends of the late R. Eldon Hickox. The award is granted to a degree graduate going into the full-time ministry of the gospel who, having shown diligence and sincerity in their studies, possesses ability and desire to preach the gospel.

L'Etete Church of Christ Timothy Award: Presented to a student who has worked diligently towards their studies, who has applied their learning and wishes to carry their skills into a Christian ministry; whether it be pulpit, missionary, or youth and family ministries in the Maritimes or a Maritime supported ministry. They should strive to display the character of 1 Timothy 4:12 in daily living before others.

Annie and Harry Mellish Memorial: This annual award of \$300 is granted in memory of Annie and Harry Mellish by their children Ron Mellish, Barry Mellish and Sharon Moase. It will be awarded to a graduating student who best exemplifies a servant leadership style in his or her chosen area of ministry (Matthew 20:25-28).

PEI GOVERNMENT GRANTS

PEI students enrolled in full-time studies at UPEI, Holland College, Collège Acadie Î.-P.-É., or Maritime Christian College may be eligible for bursaries and awards offered by the Government of Prince Edward Island.

For information about PEI student loans, bursaries, grants and awards visit [PEI Student Financial Services](#).

CANADIAN GOVERNMENT LOANS

Government Student Aid Programs are designed to provide financial assistance to those who cannot otherwise afford to continue their education beyond high school. The program is intended to supplement and not replace the applicant's available resources. To qualify for assistance you must be a Canadian or have permanent resident status (landed immigrant).

For information on student loans, bursaries, grants and awards from other provinces visit [Government of Canada - Education Planning and Student Aid](#)



Special Events



SPECIAL EVENTS

The Kenneth T. Norris Lectures

Each Spring, the College hosts a series of lectures at a church in Charlottetown. These lectures began when the College was established and in 1981 became known as the Kenneth T. Norris Lectures. The Lectures provide an opportunity for the students, friends and supporters of the College to hear some of the most outstanding speakers from the fellowship of the Christian Churches or Churches of Christ in North America.

For those who come in person, the week of the Lectures is a highlight, with friendships being made and renewed and a time of study and learning. Lectures are held in both the morning and evening. Lectures are also available for viewing on MCC's website after the event.





MCC Personnel



Faculty and Administration

Brandon Guindon - Consultant

BSc, Linfield College
MA, Hope International University

Jimmy Harris - Course Developer

BSc, Cincinnati Bible College & Seminary
MA, Gonzaga University

Richard Hovey - Adjunct

BA, Crandall University
MA, MA, Briercrest Seminary
DMin, Portland Seminary

Richard Jones - President

BScFE, University of New Brunswick
BComm, University of Windsor
MBA, Dalhousie University

Bill Krause - Course Developer

BA, Puget Sound Christian College
MA, Eastern Washington University

Thomas Marshall - Academic Dean

BA, BA, Lincoln Christian College
MDiv, Lincoln Christian Seminary

Justin McMurdie - Course Developer, Adjunct

BA, Boise Bible College
MA, Biola University
MA, George Fox University

David Nelson - Course Developer, Adjunct

BSc, Sam Houston State University
MEd, Prairie View A&M University

Jerry Scripture - Director of Online Learning

BSc, University of Nebraska
MA, University of South Florida
PhD, Capella University

Brett Seybold - Course Developer, Adjunct

BA, Cincinnati Christian University
MA, Cincinnati Christian University
MA, Lincoln Christian University
PhD, Liberty University

Board of Directors

Dan Foreman (Vice-Chair).....	Fredericton, NB
Carlos Medrano	Halifax, NS
Ian Morse (Secretary).....	Cornwall, PE
Gregory Nicholson (Chair)	Halifax, NS
Jim Nutt	Tomball, TX
Heather Stewart	Wellington, NS
Kent Wiesel (Treasurer)	Saint John, NB

Board Members teaching as adjunct professors will step away from their role in the board for that semester.

Staff

Richard Jones	President
Penny Ching	Director of Finance and Administration
Katie Stevenson	Director of Marketing
Ellen Arsenault	Administrative Assistant

Master Calendar



Master Calendar 2024-2025

First Semester (September - December)

Application Deadline	Thurs., Aug. 15
Registration Day – Tuition & fees due and non-refundable after today	Tues., Aug. 27
Labour Day - <i>Office Closed</i>	Mon., Sept. 2
Classes Begin	Tues., Sept. 3
National Day for Truth and Reconciliation – <i>Office Closed</i>	Mon., Sept 30
Thanksgiving Day – <i>Office Closed</i>	Mon., Oct. 14
Mid-Semester Break	Oct. 21 - 27
Remembrance Day – <i>Office Closed</i>	Mon., Nov. 11
Last day of Classes	Sun., Dec. 15
Faculty Grades Due	Wed., Dec. 18
Grades available	Fri., Dec. 20

Second Semester (January - April)

Application Deadline	Sun., Dec. 15
New Year's Day - <i>Office Closed</i>	Wed., Jan. 1
Registration Day – Tuition & fees due and non-refundable after today	Thurs., Jan. 2
Classes Begin	Mon., Jan. 6
Islander Day – <i>Office Closed</i>	Mon., Feb. 17
Mid-Semester Break	Feb. 24 - Mar. 2
Good Friday – <i>Office Closed</i>	Fri., Apr. 18
Last day of Classes	Sun., Apr. 20
Easter Monday – <i>Office Closed</i>	Mon., Apr. 21
Faculty Grades Due	Thurs., Apr. 24
Grades available	Fri., Apr. 25

Third Semester (May - August)

Application Deadline	Tues., Apr. 15
Registration Day – Tuition & fees due and non-refundable after today	Mon., Apr. 28
Classes Begin	Mon., May 5
Kenneth T. Norris Lectures	May 6 - 8
Victoria Day – <i>Office Closed</i>	Mon., May 19
Graduation	Sat., June 7
Mid-Semester Break	June 23 - 29
Canada Day – <i>Office Closed</i>	Tues., July 1
Local PEI Holiday – <i>Office Closed</i>	Fri., Aug. 15
Last day of Classes	Sun., Aug. 17
Faculty Grades Due	Wed., Aug. 20
Grades available	Fri., Apr. 22

